

# Magnetic Locking System

## Instructions :

The invisible magnetic child safety lock is to prevent the babies from opening the cabinet, drawer etc, so as to avoid eating and using the dangerous medicine, cutter by mistake.

## Features :

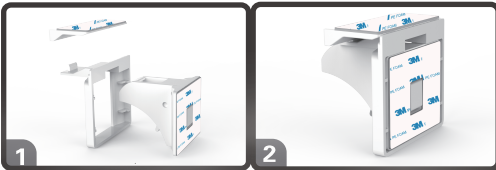
1. Take use of permanent strong magnetic (magnetic attractive and repel each other) principle and designs, make the lock more safe, reliable and beautiful.
2. The lock won't damage the original furniture, installation is concealed in order to make the babies not able to crank, and even can be used for prevention of burglary. It solve the shortage of the market product at currently.
3. No need any tools for installation. Very convenient in using, only need to make the magnetic spoon gently counter point and the lock can be opened.
4. Unique normally open function, more easier to use and humanized. (can use this function when babies are not with adults).

## Installation Reminder:

1. Pls clean and dry the surface.
2. When pack lock body on blister, already push the switch up that will make magnet key could not open or close the lock.
3. 3M tape: keep 24 hours before your first use for max adhesive.

## Installation Instruction

### Installation Cradle



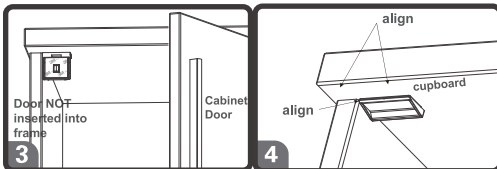
Please assemble the installation cradle first from (Fig 1) to (Fig 2). Peel off the 3M adhesive of the latch first on the installation cradle before installation.

### 1. Latch Installation

Installation method may have to be slight altered based on your cabinet or drawer style and design.

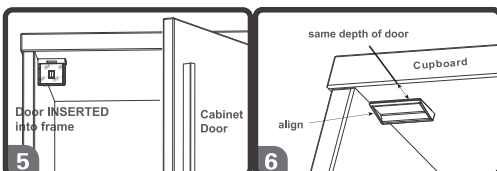
**Latch Installation:** Cabinets or drawers come in two styles. Please identify the style relevant to you.

### Style 1: Door NOT inserted into frame



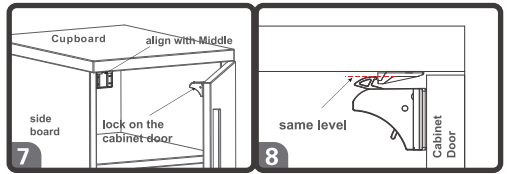
For cabinets where the door is not inserted into frame (Fig 3). Align the cradle (Fig 2) with the side frame (Fig 4) of the cabinet.

### Style 2: Door INSERTED into frame



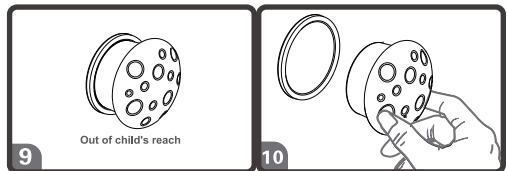
For cabinets where the door is inserted into frame (Fig 5). Apply the cradle (Fig 2) at a depth equal to the thickness of the cabinet door.

## 2. Lock Installation:



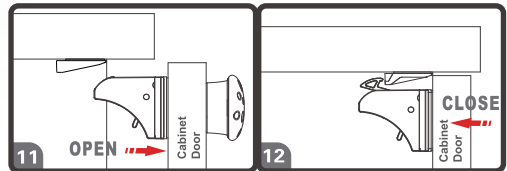
Peel off the 3M adhesive of the lock on the installation cradle, close the door. the lock is on the cabinet door (Fig 7).

## 3. Key Installation

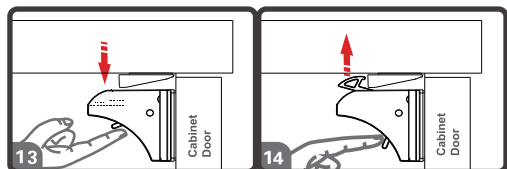


Attach the key holder to the wall, or any place out of reach of child (Fig 9, 10).

## Usage



To open cabinet, touch the magnet key on the surface of cabinet door (Fig 11). To lock it, simply release the magnet key (Fig 12).



When child is not around, pull the switch up for easy quick access (Fig 13). To return to the lock functionality, pull the switch back down (Fig 14).